

### LED Area Light XAL Series

Project:	
Catalog#:	
Approved by:	

#### Features

- LED: Lumileds
- Color Temperature: 5000K (cool white)
- Color Rendering Index (CRI): > 80
- Long LED life;  $L_{70} > 60,000$  hours.  $L_{70}$  hours are IES TM-21-11 calculated hours.
- Rated for Ambient Temperatures up to 40°C/104°F
- Power Factor (PF) > 0.9
- Total Harmonic Distribution (THD) < 20%
- Input Voltage: 120 – 277V; 50/60 Hz
- Dimmable: 0-10Vdc
- Distribution: Type III
- Ultra-durable Powder Coat Paint
- Standard Color Bronze
- UL/cUL Listed
- IP65
- Warranty: 5 years

#### Applications

- Security
- Outdoor Lighting
- Hotels
- Warehouses
- Parking Lots
- Street Lights
- Parks



#### Options

- 6" long mounting arm pre-installed for square pole mounting
- Slip Fitter (XFL-SF), accessory, can be used to attach fixture to a 2 3/8" OD tenon (2-inch pipe).
- A round pole adapter (XAL-RPA) accessory, can be used to mount this fixture on round poles, up to 5" diameter.

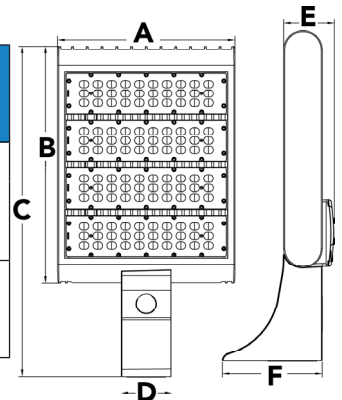


Visit [www.designlights.org](http://www.designlights.org) for the Qualified Products List



#### Dimensions

Model	A	B	C	D	E	F	Effective Projected Area (sf)	Weight
XAL-5080							Top 1.24 Side 0.50 Front 0.49	12.8 lbs
XAL-5100	12 5/8	9 7/8	16 1/2	3 5/8	3 7/16	7 1/8		
XAL-5150								
XAL-5220	12 5/8	17	23 5/8	3 5/8	3 5/8	7 1/8	Top 1.99 Side 0.66 Front 0.51	25.0 lbs



All dimensions in inches

#### XAL Series LED Area Light

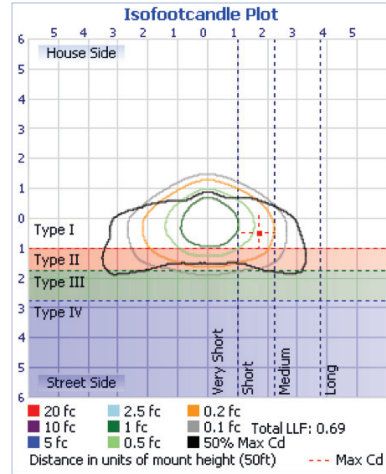
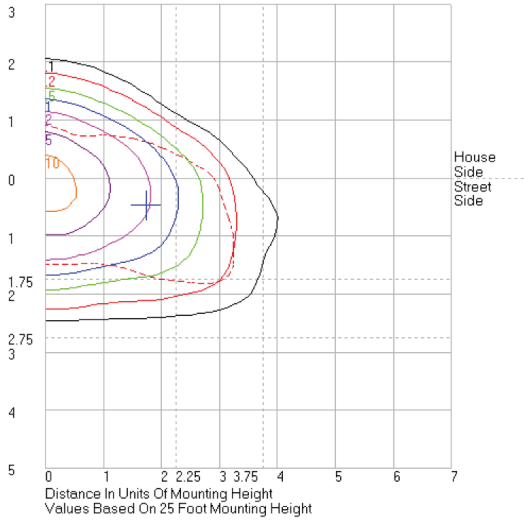
Model	CCT	Input Power	Lumen Output	Efficacy	Voltage	Mounting	Comparable to HID
XAL-5080-LED-MV	5000K	78W	9,601	123 LPW	120-277V	Arm	200W
XAL-5100-LED-MV <sup>1</sup>	5000K	99W	12,543	126 LPW	120-277V	Arm	320W
XAL-5150-LED-MV <sup>1</sup>	5000K	157W	18,408	173 LPW	120-277V	Arm	400W
XAL-5220-LED-MV <sup>1</sup>	5000K	227W	27,114	120 LPW	120-277V	Arm	750W

<sup>1</sup>Limited quantities available

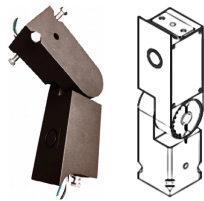
**LED Area Light**  
XAL Series

**Photometrics**

Project:	
Catalog#:	
Approved by:	



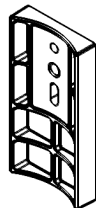
**Accessories** (Sold Separately)



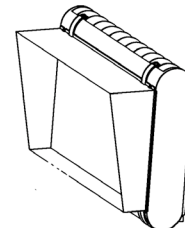
**XFL-SF:** Slip Fitter  
2 <sup>3</sup>/<sub>8</sub> " OD tenon (2-inch pipe).  
Compatible with all XAL & XFL-TR Models.



**XAL-TR:** Trunion



**XAL-RPA:** Round Pole Adapter  
Can be used to mount this fixture on round poles, up to 5" diameter.



**XHGS-L:** Half Glare Shield (220W)